

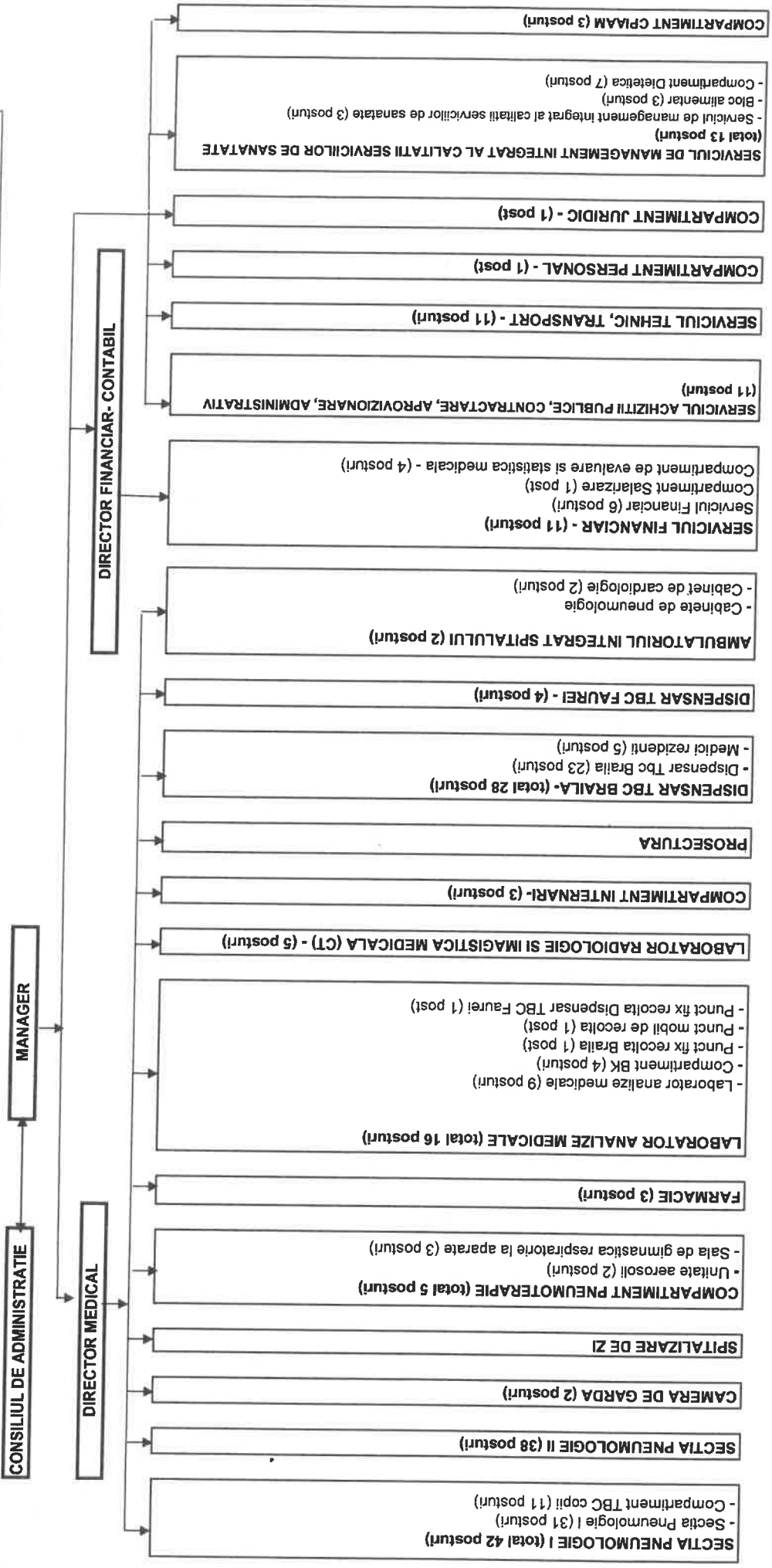
ANEXA NR. 1. CA + Hey NR. 862 p. 2/3

14 funcții de conducere  
188 funcții de execuție  
202 posturi


**CONSILIUL JUDEȚEAN BRAȘOV**  
**SPITALUL DE PNEUMOTIZIOLOGIE**  
 Str. R.S. Câmpului Nr. 21, Brașov, 810003,  
 Tel: 0239 613 665; Fax: 0239 613 113  
 www.spitaljbcbr.ro  
 splitatbcbraia@yahoo.com  

 unitate afiliată în  
 PROCES DE ACREDITARE  
 CICLUL al II-lea  







CONSILIUL JUDETEAN BRAILA  
**SPITALUL DE PNEUMOTIZIOLOGIE**

Str. R.S. Campiniu Nr. 21, Braila, 810003,  
 Tel: 0239 613 665; Fax: 0239 613 113  
 www.spitalulbcbro.ro  
 spitalbcbraila@yahoo.com

**ANMCS**

unitate aflată în  
 PROCES DE ACREDITARE  
 CICLUL al II-lea



14 Functii de conducere  
 188 Functii de executie

STAT DE FUNCTIUNI LA DATA DE

13.11.2023

**CONDUCERE**

Nr Crt.	Denumirea functiei	Grad profesional	Studii	Grad	Post	Observatii
1	Manager		S	II	1.0	
2	Director financiar-contabil		S	II	1.0	
3	Director medical		S	II	1.0	

Total CONDUCERE

3.0

**SECTII MEDICALE**  
**SPITAL**

**SECTIA PNEUMOLOGIE I**

Nr Crt.	Denumirea functiei	Grad profesional	Studii	Grad	Post	Observatii
4	Sef sectie		S	II	1.0	
5	Medic	Primar	S		1.0	
6	Medic	Primar	S		1.0	
7	Medic	Specialist	S		1.0	SUSPENDAT TEMPORAR
8	Medic	Specialist	S		1.0	
9	Asistent sef	Principal	PL	II	1.0	
10	Asistent medical	Principal	PL		1.0	
11	Asistent medical	Principal	PL		1.0	
12	Asistent medical	Principal	PL		1.0	
13	Asistent medical	Principal	PL		1.0	
14	Asistent medical	Principal	PL		1.0	
15	Asistent medical		PL		1.0	
16	Asistent medical	Principal	PL		1.0	
17	Asistent medical	Principal	PL		1.0	SUSPENDAT TEMPORAR
18	Asistent medical	Principal	PL		1.0	
19	Asistent medical	Principal	PL		1.0	SUSPENDAT TEMPORAR
20	Asistent medical	Principal	PL		1.0	
21	Asistent medical	Principal	PL		1.0	
22	Asistent medical	Principal	S		1.0	
23	Asistent medical	Principal	PL		1.0	SUSPENDAT TEMPORAR
24	Asistent medical	Principal	S		1.0	
25	Infirmiera		G		1.0	
26	Infirmiera		G		1.0	
27	Infirmiera		G		1.0	
28	Infirmiera				1.0	

29	Infirmiera		G		1.0	
30	Infirmiera		G		1.0	
31	Infirmiera		G		1.0	
32	Ingrijitoare		G		1.0	
33	Ingrijitoare		G		1.0	
34	Ingrijitoare		G		1.0	

**Total SECTIA PNEUMOLOGIE I**

**31.0**

**COMPARTIMENT TBC COPII**

35	Medic	Primar	S		1.0	MEDIC COORD.
36	Asistent medical	Principal	PL		1.0	ASISTENT COORD.
37	Asistent medical	Principal	PL		1.0	
38	Asistent medical	Principal	PL		1.0	
39	Asistent medical	Principal	PL		1.0	
40	Asistent medical	Principal	PL		1.0	
41	Infirmiera		G		1.0	
42	Infirmiera		G		1.0	
43	Infirmiera		G		1.0	
44	Infirmiera		G		1.0	
45	Infirmiera		G		1.0	

**Total COMPARTIMENT TBC COPII**

**11.0**

**Total SECTIA PNEUMOLOGIE I**

**42.0**

**SECTIA PNEUMOLOGIE II**

Nr Crt.	Denumirea functiei	Grad profesional	Studii	Grad	Post	Observatii
46	Sef sectie		S	II	1.0	
47	Medic	Specialist	S		1.0	MEDIC COORD. AMBULATORIU
48	Medic	Specialist	S		1.0	
49	Medic	Primar	S		1.0	
50	Medic	Primar	S		1.0	
51	Medic		S		1.0	VACANT
52	Asistent medical	Principal	PL		1.0	ASISTENT SEF UNITATE
53	Asistent sef	Principal	PL	II	1.0	
54	Asistent medical	Principal	S		1.0	
55	Asistent medical	Principal	S		1.0	
56	Asistent medical	Principal	PL		1.0	
57	Asistent medical		PL		1.0	
58	Asistent medical	Principal	PL		1.0	
59	Asistent medical	Principal	S		1.0	
60	Asistent medical	Principal	PL		1.0	
61	Asistent medical	Principal	PL		1.0	
62	Asistent medical	Principal	PL		1.0	
63	Asistent medical	Principal	PL		1.0	
64	Asistent medical	Principal	PL		1.0	
65	Asistent medical	Principal	PL		1.0	
66	Asistent medical	Principal	PL		1.0	
67	Asistent medical	Principal	PL		1.0	
68	Asistent medical	Principal	PL		1.0	
69	Asistent medical		PL		1.0	
70	Asistent medical	Principal	PL		1.0	
71	Infirmiera		G		1.0	
72	Infirmiera		G		1.0	
73	Infirmiera		G		1.0	
74	Infirmiera		G		1.0	
75	Infirmiera		G		1.0	
76	Infirmiera		G		1.0	
77	Infirmiera		G		1.0	
78	Infirmiera		G		1.0	
79	Infirmiera		G		1.0	
80	Infirmiera		G		1.0	
81	Ingrijitoare		G		1.0	
82	Ingrijitoare		G		1.0	
83	Ingrijitoare		G		1.0	

**Total SECTIA PNEUMOLOGIE II**
**38.0**

**CAMERA DE GARDA**

Nr Crt.	Denumirea functiei	Grad profesional	Studii	Grad	Post	Observatii
84	Asistent medical		PL		1.0	
85	Asistent medical	Principal	PL		1.0	

<b>Total CAMERA DE GARDA</b>	<b>2.0</b>
------------------------------	------------

**COMPARTIMENT PNEUMOTERAPIE****UNITATE AEROSOLI**

86	Asistent medical		PL		1.0	VACANT
87	Ingrijitoare		PL		1.0	VACANT

<b>Total UNITATE AEROSOLI</b>	<b>2.0</b>
-------------------------------	------------

**SALA DE GIMNASTICA RESPIRATORIE LA APARATE**

88	Kinetoterapeut		S		1.0	VACANT
89	Kinetoterapeut		S		1.0	VACANT
90	Ingrijitoare		G		1.0	VACANT

<b>Total SALA DE GIMNASTICA RESPIRATORIE LA APARATE</b>	<b>3.0</b>
---	------------

<b>Total COMPARTIMENT PNEUMOTERAPIE</b>	<b>5.0</b>
---	------------

**LABORATOR RADIOLOGIE SI IMAGISTICA MEDICALA (CT)**

Nr Crt.	Denumirea functiei	Grad profesional	Studii	Grad	Post	Observatii
91	Medic	Primar	S		1.0	MEDIC COORD.
92	Asistent medical	Principal	S		1.0	ASISTENT COORD.
93	Asistent medical	Principal	PL		1.0	
94	Asistent medical	Principal	PL		1.0	
95	Asistent medical	Principal	PL		1.0	

<b>Total LABORATOR RADIOLOGIE SI IMAGISTICA MEDICALA (CT)</b>	<b>5.0</b>
---	------------

**FARMACIE**

Nr Crt.	Denumirea functiei	Grad profesional	Studii	Grad	Post	Observatii
96	Farmacist sef	Specialist	S		1.0	
97	Asistent medical	Principal	PL		1.0	
98	Asistent medical	Principal	PL		1.0	

**Total FARMACIE** **3.0**

**LABORATOR ANALIZE MEDICALE**

Nr Crt.	Denumirea functiei	Grad profesional	Studii	Grad	Post	Observatii
99	Sef laborator		S		1.0	REZERVAT DIR. MEDICAL
100	Biolog	Specialist	S		1.0	
101	Biolog	Specialist	S		1.0	
102	Asistent medical	Principal	PL		1.0	
103	Asistent medical	Principal	PL		1.0	
104	Asistent medical	Principal	PL		1.0	
105	Registrator medical		M		1.0	
106	Registrator medical		M		1.0	
107	Ingrijitoare		G		1.0	

**Total LABORATOR ANALIZE MEDICALE** **9.0**

**COMPARTIMENT BK**

108	Biolog	Principal	S		1.0	BIOLOG COORD.
109	Asistent medical	Principal	PL		1.0	
110	Asistent medical		PL		1.0	
111	Ingrijitoare		G		1.0	

**Total COMPARTIMENT BK** **4.0**

**Punct fix recolta Braila**

112	Asistent medical		PL		1.0	VACANT
-----	------------------	--	----	--	-----	--------

**Total Punct fix recolta Braila** **1.0**

**Punct mobil de recolta**

113	Asistent medical		PL		1.0	VACANT
-----	------------------	--	----	--	-----	--------

**Total Punct mobil de recolta** **1.0**

**Punct fix recolta dispensar TBC Faurei**

114	Asistent medical		PL		1.0	VACANT
-----	------------------	--	----	--	-----	--------

**Total Punct fix recolta dispensar TBC Faurei** **1.0**

**Total LABORATOR ANALIZE MEDICALE** **16.0**

**SERVICIUL DE MANAGEMENT INTEGRAT AL CALITATII SERVICIILOR DE SANATATE**

Nr Crt.	Denumirea functiei	Grad profesional	Studii	Grad	Post	Observatii
115	Sef serviciu		S	II	1.0	
116	Referent de specialitate	I	S		1.0	
117	Economist	IA	S		1.0	SUSPENDAT TEMPORAR

**Total SERVICIUL DE MANAGEMENT INTEGRAT AL CALITATII SERVICIILOR DE SANATATE 3.0**

**BLOC ALIMENTAR**

Nr Crt.	Denumirea functiei	Grad profesional	Studii	Grad	Post	Observatii
118	Muncitor calificat	I	G		1.0	
119	Muncitor calificat	III	G		1.0	
120	Ingrijitoare		G		1.0	

**Total BLOC ALIMENTAR 3.0**

**COMPARTIMENT DIETETICA**

Nr Crt.	Denumirea functiei	Grad profesional	Studii	Grad	Post	Observatii
121	Asistent medical	Principal	PL		1.0	ASISTENT COORD.
122	Infirmiera		G		1.0	
123	Infirmiera		G		1.0	
124	Infirmiera		G		1.0	
125	Infirmiera		G		1.0	
126	Infirmiera		G		1.0	VACANT
127	Infirmiera		G		1.0	VACANT

**Total COMPARTIMENT DIETETICA 7.0**

**Total SERVICIUL DE MANAGEMENT INTEGRAT AL CALITATII SERVICIILOR DE SANATATE 13.0**

**COMPARTIMENT CIAAM**

Nr Crt.	Denumirea functiei	Grad profesional	Studii	Grad	Post	Observatii
128	Medic	Specialist	S		1.0	
129	Asistent medical		PL		1.0	
130	Asistent medical		PL		1.0	VACANT

**Total COMPARTIMENT CIAAM 3.0**

**COMPARTIMENT INTERNARI**

Nr Crt.	Denumirea functiei	Grad profesional	Studii	Grad	Post	Observatii
131	Registrator medical		M		1.0	
132	Registrator medical		M		1.0	
133	Registrator medical		M		1.0	

**Total COMPARTIMENT INTERNARI****3.0****TOTAL SPITAL****133.0****DISPENSAR TBC****DISPENSAR TBC BRAILA**

Nr Crt.	Denumirea functiei	Grad profesional	Studii	Grad	Post	Observatii
134	Asistent medical	Principal	PL		1.0	ASISTENT COORD.
135	Asistent medical	Principal	PL		1.0	
136	Asistent medical	Principal	PL		1.0	
137	Asistent medical	Principal	PL		1.0	
138	Asistent medical	Principal	PL		1.0	
139	Asistent medical	Principal	PL		1.0	
140	Asistent medical	Principal	PL		1.0	
141	Asistent medical	Principal	PL		1.0	
142	Asistent medical	Principal	PL		1.0	
143	Asistent medical	Principal	PL		1.0	
144	Asistent medical	Principal	PL		1.0	
145	Asistent medical	Principal	PL		1.0	
146	Asistent medical	Principal	PL		1.0	
147	Asistent medical	Principal	PL		1.0	
148	Asistent medical	Principal	PL		1.0	
149	Asistent medical	Principal	PL		1.0	
150	Asistent medical	Principal	S		1.0	
151	Asistent medical	Principal	PL		1.0	
152	Asistent medical		PL		1.0	
153	Statistician medical	Principal	M		1.0	
154	Registrator medical	Principal	M		1.0	
155	Ingrijitoare		G		1.0	
156	Ingrijitoare		G		1.0	

**Total DISPENSAR TBC BRAILA****23.0****MEDICI REZIDENTI**

Nr Crt.	Denumirea functiei	Grad profesional	Studii	Grad	Post	Observatii
157	Medic rezident	Anul IV-V	S		1.0	
158	Medic rezident	Anul I	S		1.0	
159	Medic rezident	Anul II	S		1.0	
160	Medic rezident	Anul II	S		1.0	
161	Medic rezident	Anul I	S		1.0	

**Total MEDICI REZIDENTI****5.0****Total DISPENSAR TBC BRAILA****28.0****DISPENSAR TBC FAUREI**

Nr Crt.	Denumirea functiei	Grad profesional	Studii	Grad	Post	Observatii
162	Asistent medical	Principal	PL		1.0	
163	Asistent medical	Principal	PL		1.0	
164	Registrator medical	Principal	M		1.0	
165	Ingrijitoare		G		1.0	

**Total DISPENSAR TBC FAUREI****4.0****TOTAL DISPENSAR TBC**

Page 7 of 17

**32.0**



# **AMBULATORIUL INTEGRAT AL SPITALULUI**

## **CABINET DE CARDIOLOGIE**

Nr Crt.	Denumirea functiei	Grad profesional	Studii	Grad	Post	Observatii
166	Medic		S		1.0	VACANT
167	Asistent medical		S		1.0	VACANT

**Total CABINET DE CARDIOLOGIE** 2.0

**TOTAL AMBULATORIUL INTEGRAT AL SPITALULUI** 2.0

**TOTAL SECTII MEDICALE** 167.0

## **APARAT FUNCTIONAL**

### **SERVICIUL FINANCIAR**

Nr Crt.	Denumirea functiei	Grad profesional	Studii	Grad	Post	Observatii
168	Sef serviciu		S	II	1.0	
169	Economist	IA	S		1.0	SUSPENDAT TEMPORAR
170	Economist	IA	S		1.0	
171	Economist	IA	S		1.0	
172	Economist	IA	S		1.0	
173	Registrator medical		M		1.0	

**Total SERVICIUL FINANCIAR** 6.0

### **COMPARTIMENT SALARIZARE**

Nr Crt.	Denumirea functiei	Grad profesional	Studii	Grad	Post	Observatii
174	Psiholog	Practicant	S		1.0	

**Total COMPARTIMENT SALARIZARE** 1.0

### **COMPARTIMENT DE EVALUARE SI STATISTICA MEDICALA**

Nr Crt.	Denumirea functiei	Grad profesional	Studii	Grad	Post	Observatii
175	Asistent medical	Principal	PL		1.0	ASISTENT COORD.
176	Analist	IA	S		1.0	
177	Economist	IA	S		1.0	
178	Asistent medical	Principal	PL		1.0	

**Total COMPARTIMENT DE EVALUARE SI STATISTICA MEDICALA** 4.0

**Total SERVICIUL FINANCIAR** 11.0

### **SERVICIU ACHIZITII, CONTRACTARE, APROVIZIONARE, ADMINISTRATIV**

Nr Crt.	Denumirea functiei	Grad profesional	Studii	Grad	Post	Observatii
179	Sef serviciu		S	II	1.0	

180	Economist	IA	S		1.0	
181	Operator date	II	M		1.0	
182	Muncitor calificat	IV	G		1.0	
183	Muncitor calificat	I	G		1.0	
184	Spalatoreasa		G		1.0	
185	Spalatoreasa		G		1.0	
186	Spalatoreasa		G		1.0	
187	Spalatoreasa		G		1.0	
188	Ingrijitoare		G		1.0	
189	Muncitor calificat	IV	G		1.0	

**Total SERVICIU ACHIZITII, CONTRACTARE, APROVIZIONARE, ADMINISTRATIV 11.0**

**SERVICIU TEHNIC, TRANSPORT**

Nr Crt.	Denumirea functiei	Grad profesional	Studii	Grad	Post	Observatii
190	Sef serviciu		S	II	1.0	
191	Muncitor calificat	IV	G		1.0	
192	Muncitor calificat	I	G		1.0	
193	Muncitor calificat	I	G		1.0	
194	Muncitor calificat	IV	G		1.0	
195	Muncitor calificat	IV	G		1.0	
196	Muncitor calificat	I	G		1.0	
197	Muncitor calificat	IV	G		1.0	
198	Muncitor calificat		G		1.0	VACANT
199	Muncitor calificat		G		1.0	VACANT
200	Muncitor calificat		G		1.0	VACANT

**Total SERVICIU TEHNIC, TRANSPORT 11.0**

**COMPARTIMENT PERSONAL**

Nr Crt.	Denumirea functiei	Grad profesional	Studii	Grad	Post	Observatii
201	Referent de specialitate	I	S		1.0	

**Total COMPARTIMENT PERSONAL** 1.0

**COMPARTIMENT JURIDIC**

Nr Crt.	Denumirea functiei	Grad profesional	Studii	Grad	Post	Observatii
202	Consilier juridic	IA	S		1.0	

**Total COMPARTIMENT JURIDIC** 1.0

**TOTAL SERVICII AUXILIARE** 35.0

**TOTAL GENERAL** 202

Manager,

Ec. Sinpetru Stelian



Intocmit,

Birou Runos  
Sef birou Malinche Diana